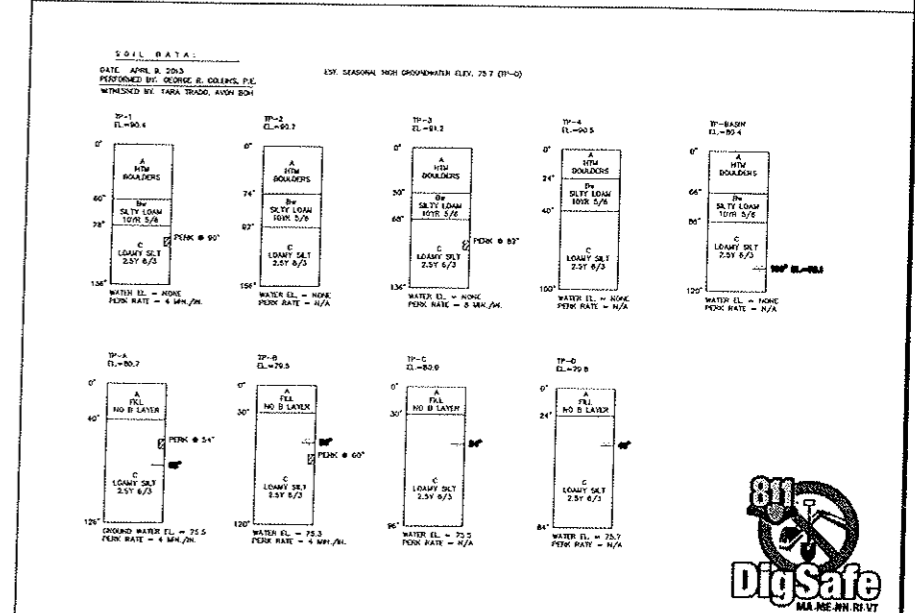
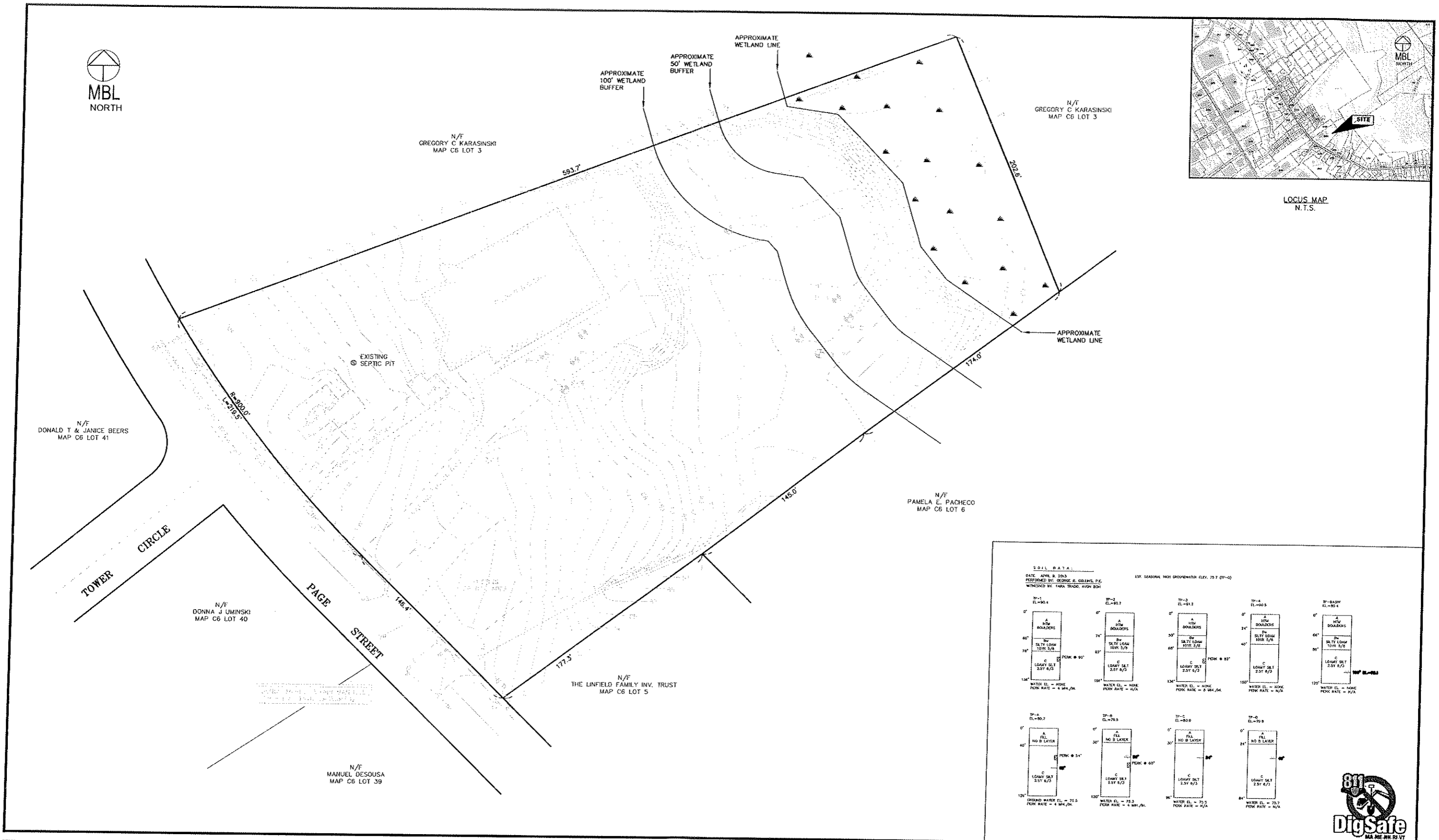


LOCUS MAP
N.T.S.



UCS: JMS VIEW: LUMAN: CTE: X:\2022\02\02\CIVIL\DWG\2022-02-02\2022-02-02\2022-02-02.dwg 2/15/2022 8:10:17 PM 4606e PDF

No.	DATE	DESCRIPTION	BY
REVISIONS			

PROJ. MANAGER:	MBL	SEAL	SEAL
CHIEF DESIGNER:	MBL		
REVIEWED BY:	DATE		

PREPARED FOR
STONEBRIDGE HOMES, INC.
 32 NORFOLK AVENUE
 SOUTH EASTON MASSACHUSETTS

SCALE:
 HORIZ.: 1"=30'
 VERT.:
 DATUM:
 HORIZ.: ASSUMED
 VERT.: NAVD88
 GRAPHIC SCALE

MBL
 LAND DEVELOPMENT & PERMITTING, CORP.
 5 BRISTOL DRIVE, SUITE 3A
 SOUTH EASTON, MA 02375
 P-508.297.2746
 EMAIL: info@MBLLandDevelopment.com
 WEB: www.MBLLandDevelopment.com

PROPOSED SITE PLANS
 EXISTING CONDITIONS PLAN
 CHAPTER 40B - WINDSOR HEIGHTS
 ASSESSORS MAP C6, BLOCK 1 & PLOT 4
 AVON MASSACHUSETTS

PROJ. No.: 2022-002
 DATE: MARCH 15, 2022
C-3.0