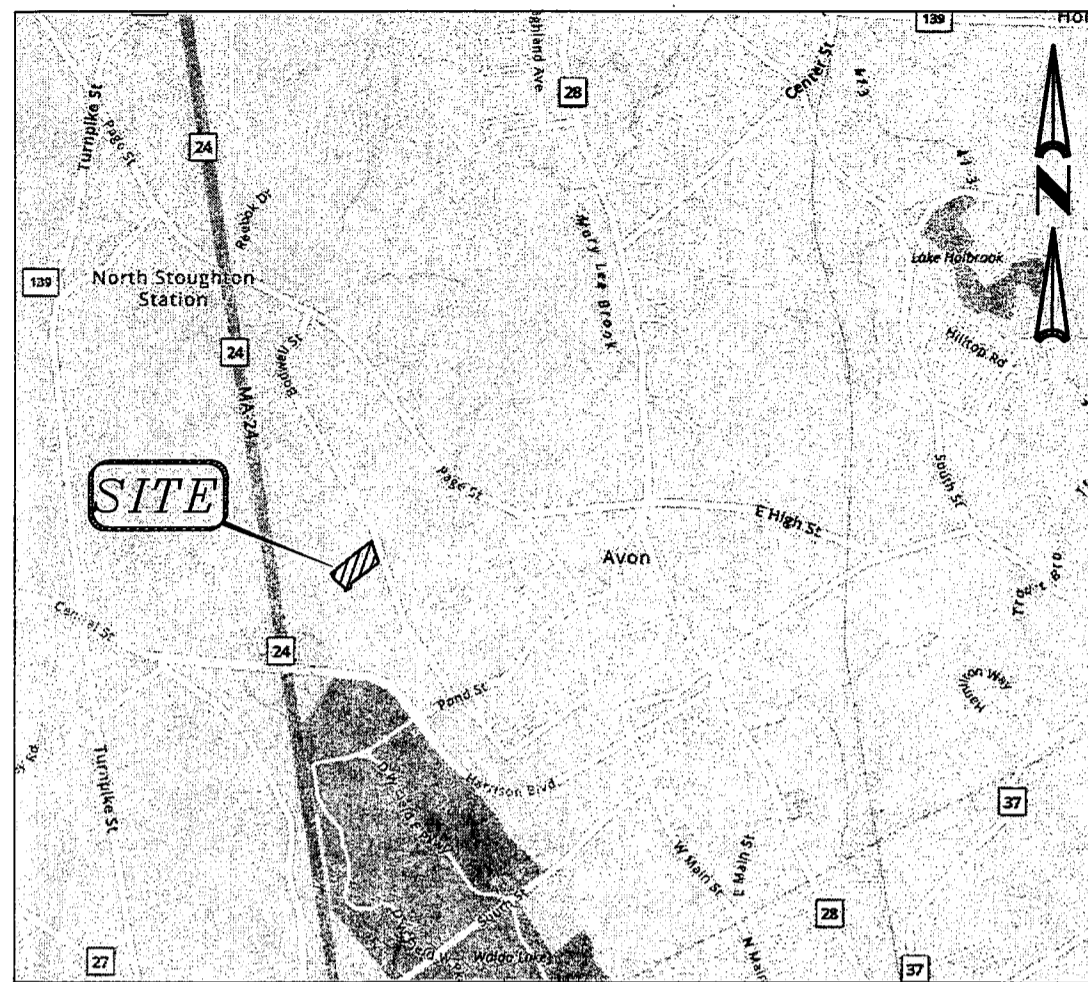


TOWN OF AVON
 2022 MAR 31 A 10: 28
 TOWN CLERK



SITE DEVELOPMENT PLANS

FOR
 ONE KIDDIE DRIVE
 AVON, MA

LOCATION MAP

AUGUST 10, 2020

SHEET INDEX			
SHEET No.	DESCRIPTION	LATEST REVISED DATE	CONSTRUCTION REVISIONS
1	COVER SHEET	03/04/21	
2	EXISTING CONDITIONS PLAN	03/04/21	
3	LAYOUT PLAN	03/04/21	
4	GRADING PLAN	03/04/21	
5	SEWER, DRAIN & UTILITY PLAN	03/04/21	
6	DETAIL SHEET	03/04/21	
7	DETAIL SHEET	03/04/21	
8	DETAIL SHEET	03/04/21	



LOCATION MAP
 SCALE 1" = 100'

OWNER/APPLICANT:

KRUPA/LZK PROPERTIES LLC
 455 DORCHESTER AVENUE
 BOSTON, MA 02127

CIVIL ENGINEERS:

KELLY ENGINEERING GROUP, INC.
 0 CAMPANELLI DRIVE
 BRAINTREE, MA 02184

ARCHITECT:

RKB ARCHITECTS, INC.
 0 CAMPANELLI DRIVE
 BRAINTREE, MA 02184

ATTORNEY:

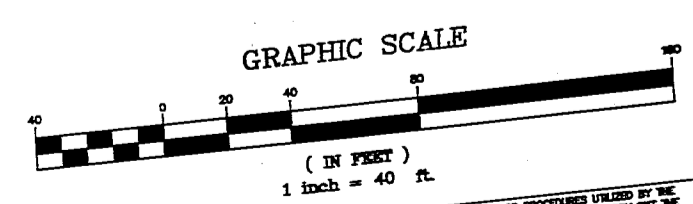
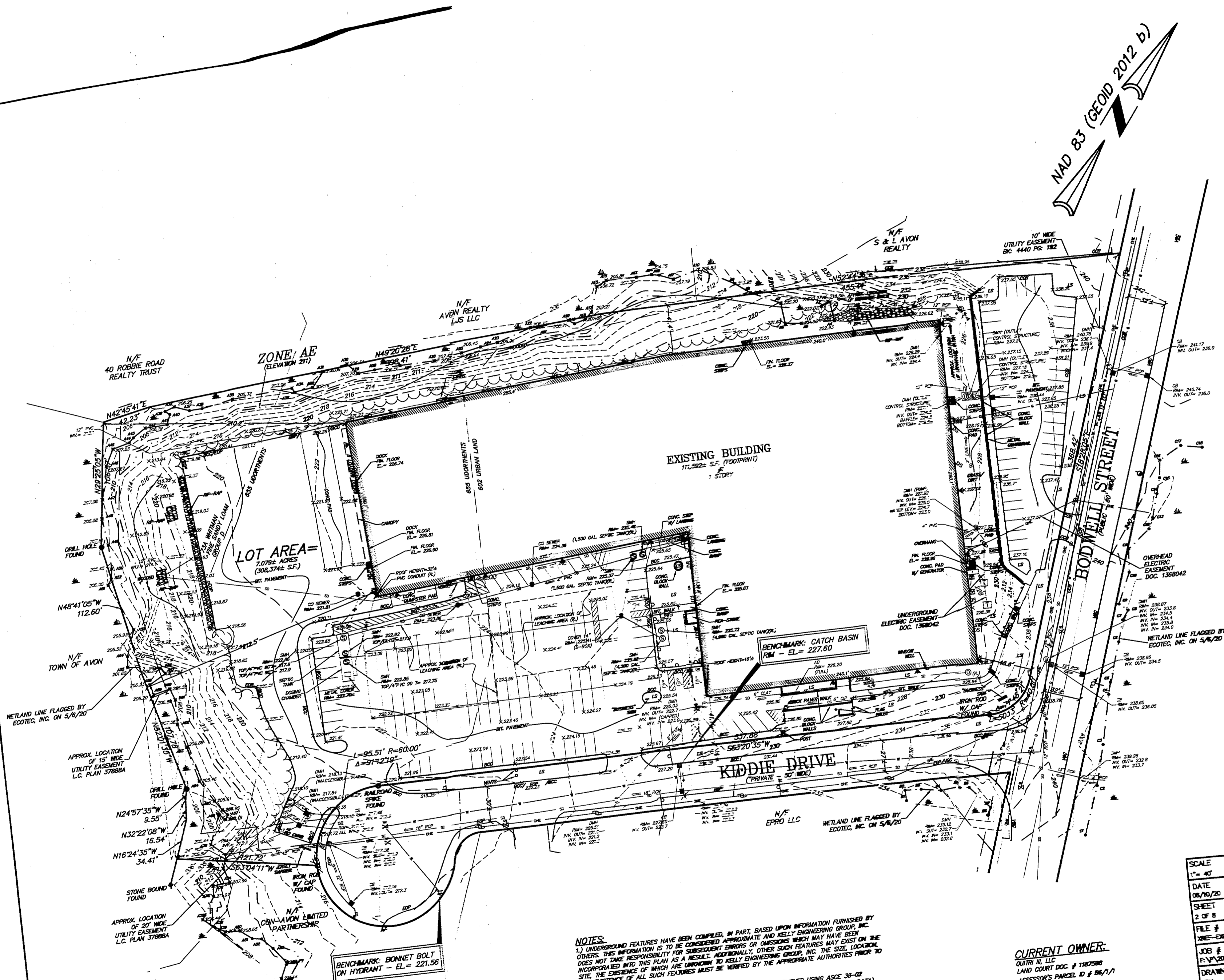
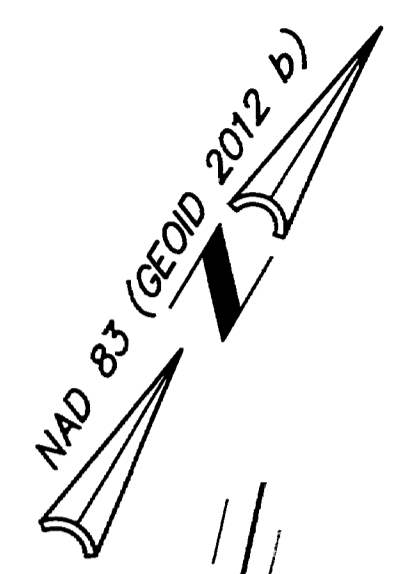
FRANK MARINELLI
 439 WASHINGTON STREET
 BRAINTREE, MA 02184

KELLY ENGINEERING GROUP SHALL NOT BE RESPONSIBLE FOR CONSTRUCTION MEANS, METHODS, TECHNIQUES, OR PROCEDURES UTILIZED BY THE CONTRACTOR, NOR FOR THE SAFETY OF PUBLIC OR CONTRACTOR'S EMPLOYEES, OR FOR THE FAILURE OF THE CONTRACTOR TO CARRY OUT THE WORKING ACCORDING TO THE CONTRACT DOCUMENTS.
 THE EXTENT OF KELLY ENGINEERING GROUP'S LIABILITY FOR THIS PLAN IS LIMITED TO THE EXTENT OF THE FEE LEST THIRD PARTY COST.
 COPYRIGHT (C) by KELLY ENGINEERING GROUP, INC.
 All Rights Reserved

NO PART OF THIS DOCUMENT MAY BE REPRODUCED, STORED IN A RETRIEVAL SYSTEM, OR TRANSMITTED IN ANY FORM OR BY ANY MEANS, ELECTRONIC, MECHANICAL, PHOTOCOPYING, RECORDING OR OTHERWISE, WITHOUT THE PRIOR WRITTEN PERMISSION OF KELLY ENGINEERING GROUP, INC. ANY VIOLATION OF THIS DOCUMENT WITHOUT THE WRITTEN PERMISSION OF KELLY ENGINEERING GROUP SHALL RENDER IT VOID AND ILLEGIBLE.

SCALE NA	JOB # F.V.P.2020-017	ONE KIDDIE DRIVE AVON, MA	
DATE 08/10/20	DRAWN BY C.L.	 KELLY ENGINEERING GROUP civil engineering consultants 0 Campanelli Drive, Braintree, MA 02184 Phone: 781-843-4333 www.kellyengineeringgroup.com	SHEET NO.
SHEET 1 OF 8	CHKD BY CSH		1
FILE # 2020-017-TS03	APPD BY DNK		

LEGEND	
	CATCH BASIN/ DOUBLE CB
	DRAIN MANHOLE
	ROOF DRAIN/ DOWN SPOUT
	A.C. UNIT
	HYDRANT
	WATER VALVE
	SEWER MANHOLE
	VERTICAL GRANITE CURB
	BITUMINOUS CONCRETE CURB
	LANDSCAPED
	GAS METER
	GAS VALVE
	SIGN
	CHAIN LINK FENCE
	METAL GUARDRAIL
	TRANSFORMER
	TREE LINE
	OVERHEAD ELECTRIC
	UNDERGROUND ELECTRIC LINE
	UTILITY POLE
	GULLY WIRE
	MOUNTED LIGHT
	DRILL HOLE
	IRON ROD/PIPE
	BOUND
	CONCRETE
	BITUMINOUS PAVEMENT
	CONTOUR LINE (MNF)
	CONTOUR LINE (MNF)
	SPOT GRADE
	WETLAND
	WETLAND FLAG
	WETLAND LINE
	DRAIN LINE
	SEWER LINE
	WATER LINE
	GAS LINE



BENCHMARK: BONNET BOLT ON HYDRANT - EL = 221.56

PLAN REFERENCES:
1.) L.C. Plan 37886A

- NOTES:**
- 1.) UNDERGROUND FEATURES HAVE BEEN COMPILED, IN PART, BASED UPON INFORMATION FURNISHED BY OTHERS. THIS INFORMATION IS TO BE CONSIDERED APPROXIMATE AND KELLY ENGINEERING GROUP, INC. DOES NOT TAKE RESPONSIBILITY FOR SUBSEQUENT ERRORS OR OMISSIONS WHICH MAY EXIST ON THE SITE, THE EXISTENCE OF WHICH ARE UNKNOWN TO KELLY ENGINEERING GROUP, INC. THE SIZE, LOCATION AND EXISTENCE OF ALL SUCH FEATURES MUST BE VERIFIED BY THE APPROPRIATE AUTHORITIES PRIOR TO CONSTRUCTION.
 - 2.) THE LOCATION OF ALL UTILITIES SHOWN HEREIN HAVE BEEN ESTABLISHED USING ASCE 38-02 (STANDARD GUIDELINES FOR THE COLLECTION AND DEPICTION OF EXISTING SUBSURFACE UTILITY DATA) CONSTRUCTION.
 - 3.) THE SITE DETAIL AND SURFACE IMPROVEMENTS DEPICTED HEREIN WERE OBTAINED FROM AN ON THE GROUND SURVEY PERFORMED BY KELLY ENGINEERING GROUP, INC. IN FEBRUARY, MARCH AND MAY OF 2020.
 - 4.) ELEVATIONS SHOWN ARE BASED ON THE NORTH AMERICAN DATUM OF 1988 (NAD83). VERTICAL CONTROL WAS PROVIDED BY GPS RTK SURVEY PERFORMED BY KELLY ENGINEERING GROUP, INC.

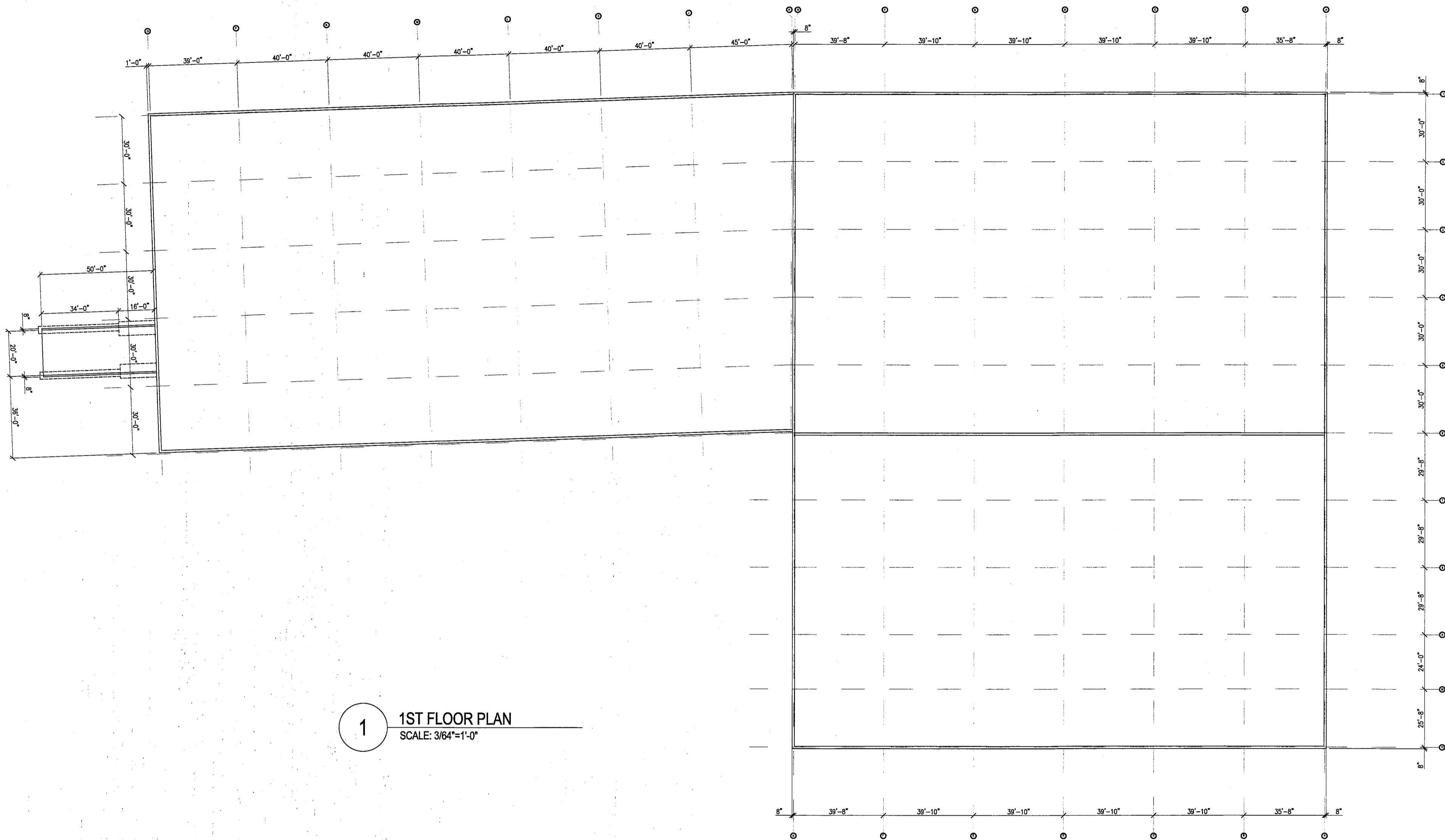
CURRENT OWNER:
OUTRI II, LLC
LAND COURT DOC. # 1587588
ASSESSOR'S PARCEL ID # 06/1/1

SCALE	3.	03/04/21	NO CHANGE	
1" = 40'	2.	01/25/21	NO CHANGE	
DATE	1.	09/24/20	PEER REVIEW	BY
06/10/20	REV	DATE	REVISION	
SHEET	KARAS & KARAS GLASS			
2 OF 8	1 KIDDIE DRIVE			
FILE #	AVON, MA			
30E-0000	EXISTING CONDITIONS			
JOB #	PLAN			
F:\V\2020-017	KELLY ENGINEERING GROUP			
DRAWN BY	civil engineering consultants			
JEM	0 Campanelli Drive, Braintree, MA 01905			
CHECK BY	Phone: 781-543-4333 www.kellyengr.com			
SMI				
APPD BY				
SMI				

SHEET NO. **2**

KELLY ENGINEERING GROUP SHALL NOT BE RESPONSIBLE FOR CONSTRUCTION, MAINTENANCE, REPAIRS, OR PROCEDURES PERFORMED BY THE CONTRACTOR. THE CONTRACTOR SHALL BE RESPONSIBLE FOR OBTAINING ALL NECESSARY PERMITS AND FOR THE PAYING OF ALL FEES AND THIRD PARTY COSTS. KELLY ENGINEERING GROUP SHALL NOT BE RESPONSIBLE FOR THE SAFETY OF PUBLIC OR PRIVATE PROPERTY OR FOR THE SAFETY OF THE CONTRACTOR OR OTHERS. KELLY ENGINEERING GROUP SHALL NOT BE RESPONSIBLE FOR THE SAFETY OF THE CONTRACTOR OR OTHERS. KELLY ENGINEERING GROUP SHALL NOT BE RESPONSIBLE FOR THE SAFETY OF THE CONTRACTOR OR OTHERS.

COPYRIGHT (C) by KELLY ENGINEERING GROUP, INC.
All Rights Reserved



1 1ST FLOOR PLAN
SCALE: 3/64"=1'-0"

&Karas
Glass Company Inc.
2616

PROJECT:
FUTURE HOME OF KARAS & KARAS

LOCATION:
1 KIDDIE DRIVE
AVON, MA

ARCHITECT:
RKB ARCHITECTS

CONTRACTOR:
CM&B

THIS DRAWING IS FOR THE SOLE AND EXPRESS USE ON PROJECTS UNDER CONTRACT TO KARAS & KARAS GLASS CO., INC. KARAS & KARAS GLASS CO., INC. ASSUMES NO RESPONSIBILITY FOR DETAILS OR DIMENSIONS AFFECTING WORK OTHER THAN OUR OWN AND ARE NOT RESPONSIBLE FOR ERRORS OCCURRING THROUGH THE USE OF THESE DRAWINGS BY OTHERS.

SUBMISSION SET:
Proposed RAMP
RAMP REVISION

REVISIONS				
NO.	DATE	DRWN BY	CHKD BY	DESCRIPTION/REF.

JOB NO.: 925
DATE: 03/16/2022

DRAWN BY: JRB
CHECKED BY: BSK

SCALE: AS SHOWN
REFERENCE: ---

DRAWING TITLE:
PLANS

SHEET NUMBER:
P1

PROJECT:	FUTURE HOME OF KARAS & KARAS
LOCATION:	1 KIDDIE DRIVE AVON, MA
ARCHITECT:	RKB ARCHITECTS
CONTRACTOR:	CMAS

THIS DRAWING IS FOR THE SOLE AND EXPRESS USE ON PROJECTS UNDER CONTRACT TO KARAS & KARAS GLASS CO., INC. ASSUMES NO RESPONSIBILITY FOR DETAILS OR DIMENSIONS AFFECTING WORK OTHER THAN OUR OWN AND ARE NOT RESPONSIBLE FOR ERRORS OCCURRING THROUGH THE USE OF THESE DRAWINGS BY OTHERS.

RAMP SECTION

SUBMISSION SET:

NO.	DATE	DRWN BY	CHKD BY	DESCRIPTION/REF.

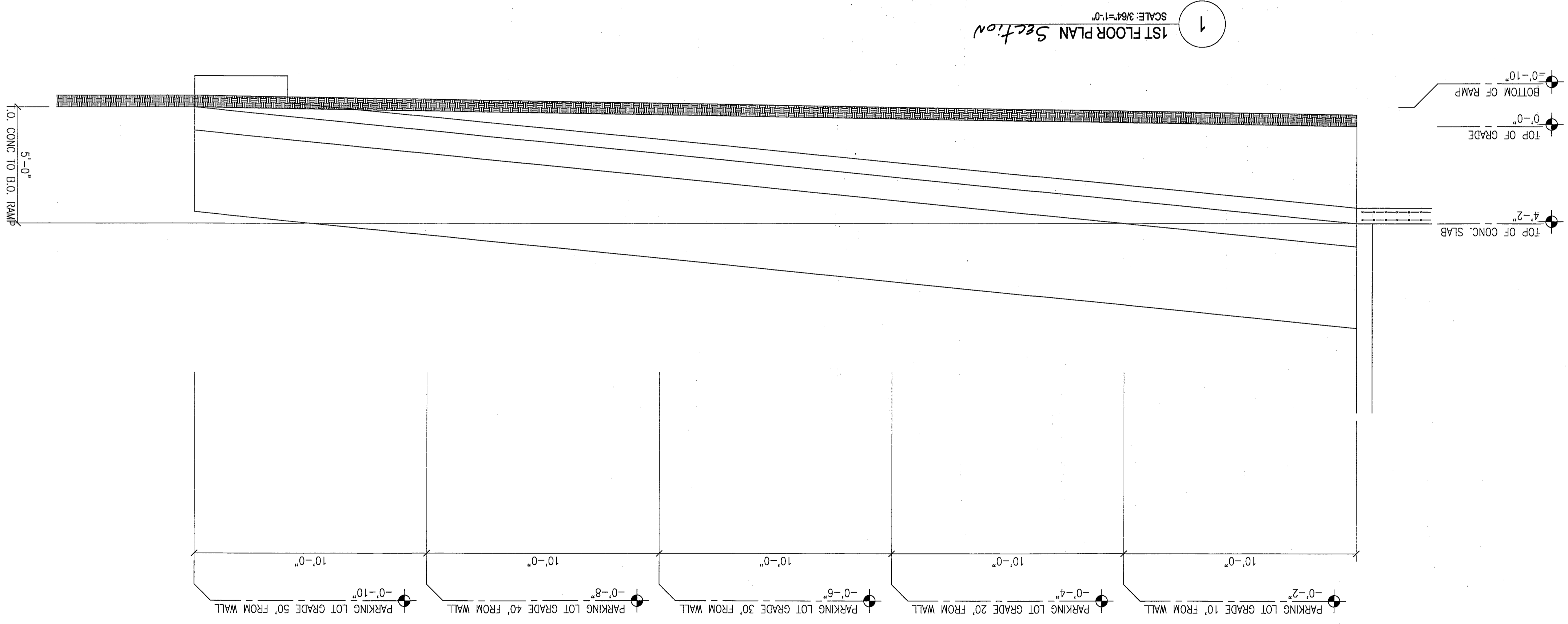
JOB NO.:	925
DATE:	03/16/2022
DRAWN BY:	JRB
CHECKED BY:	BSK
SCALE:	AS SHOWN
REFERENCE:	---

PLANS

DRAWING TITLE:

P1

SHEET NUMBER:



S-2

PROJECT No. 2022-037
 DRAWN BY MMS
 CHECKED BY MMS
 SCALE AS NOTED

TITLE
FDN DETAILS

**NEW CONC. RAMP
 KARAS & KARAS GLASS CO.**

1 KIDDIE DRIVE
 AVON, MA

No.	BY	DATE	DESCRIPTION
01	MMS	03/14/2022	FOR PERMIT

SCAN QR CODE FOR DIGITAL FILE

WAM

Walter A. McKinnon Associates, Inc.
 Consulting Engineers

278 Washington Street
 Weymouth, MA 02188
 Phone: (781) 331-5898
 www.WAM-Engineers.com

