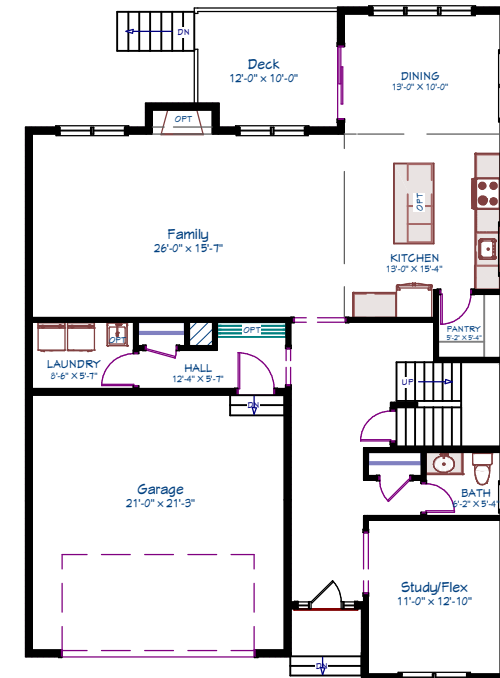
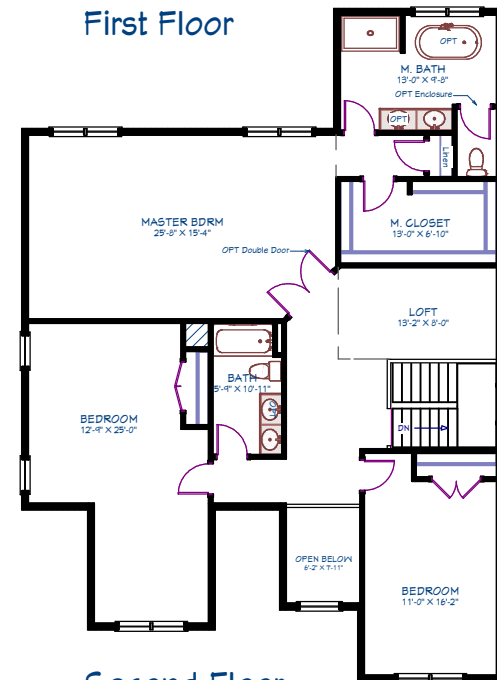


# The Chapman

Union Point  
Weymouth, MA



First Floor



Second Floor

Note: These plans & elevations are schematic & are subject to minor change. Some options/upgrades are shown



Area Breakdown		House Features	
First Floor	1,437 SF	Bedrooms	3
Second Floor	1,734 SF	Bathrooms	2.5
Total Area	3,171 SF	Garage	2 Car

Updated 2/14/22